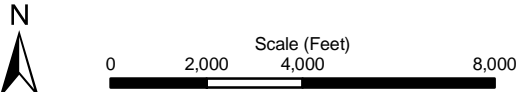


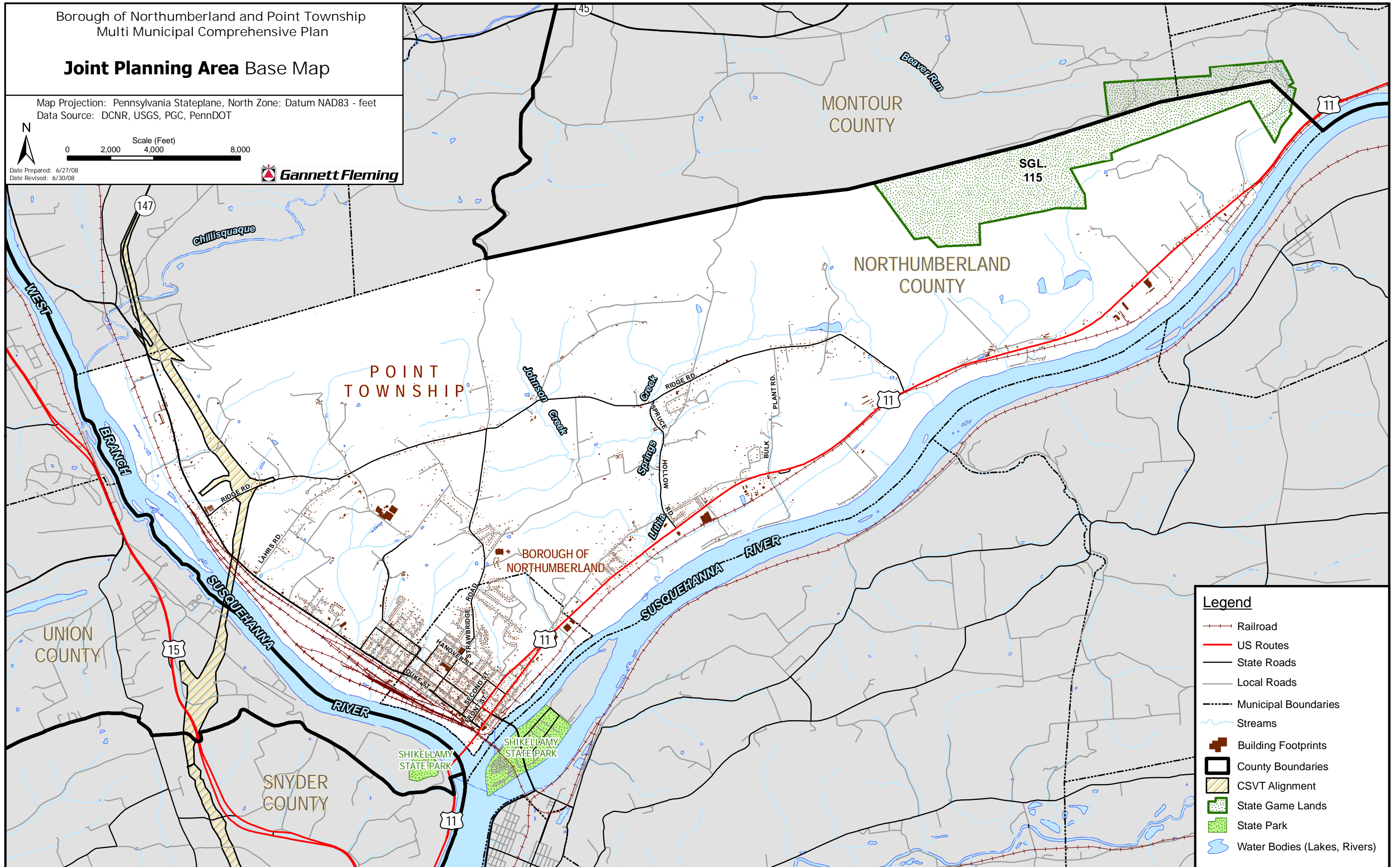
Borough of Northumberland and Point Township
Multi Municipal Comprehensive Plan

Joint Planning Area Base Map

Map Projection: Pennsylvania Stateplane, North Zone; Datum NAD83 - feet
Data Source: DCNR, USGS, PGC, PennDOT



Date Prepared: 6/27/08
Date Revised: 6/30/08

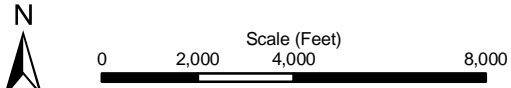


Legend

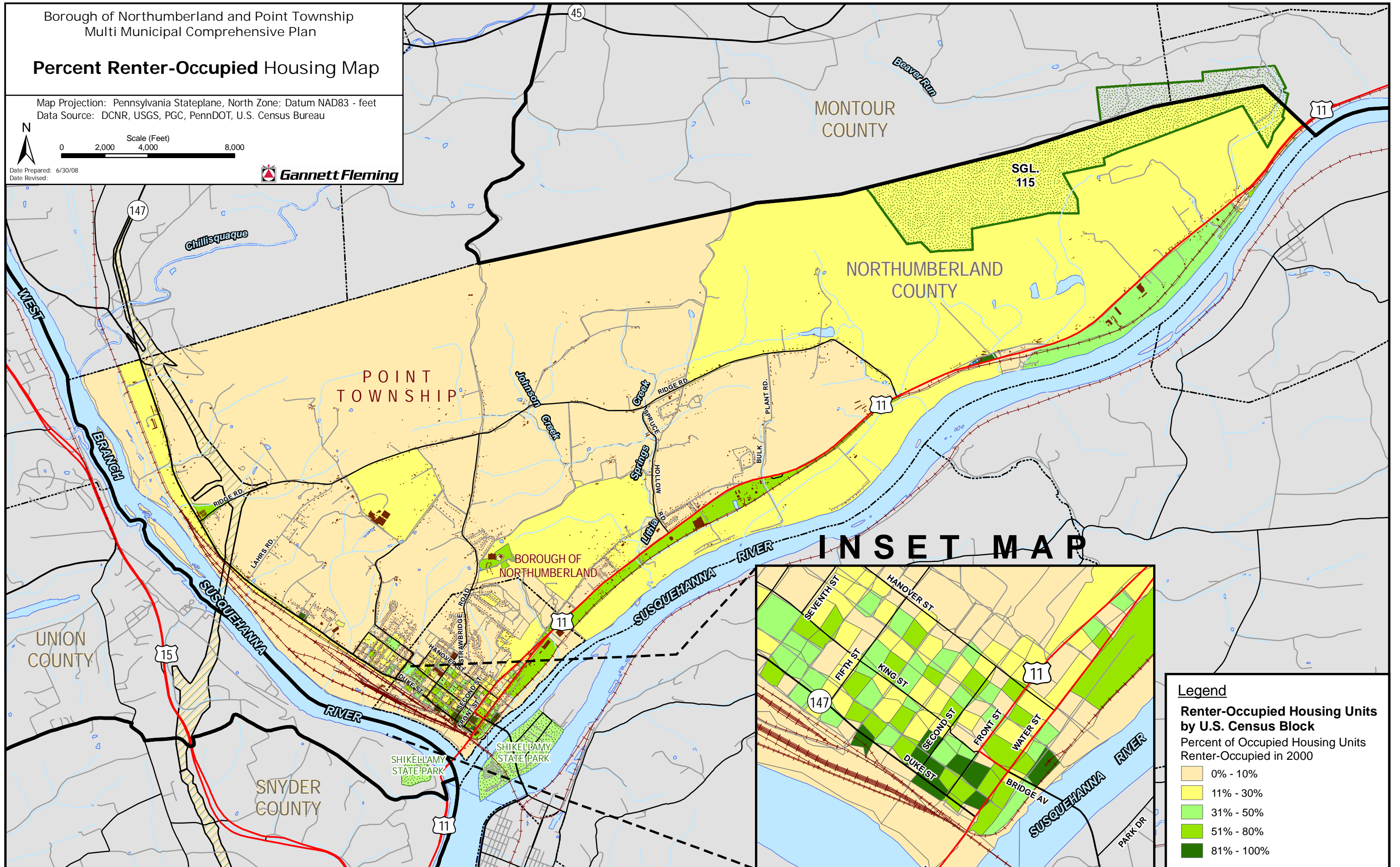
- Railroad
- US Routes
- State Roads
- Local Roads
- Municipal Boundaries
- Streams
- Building Footprints
- County Boundaries
- CSVT Alignment
- State Game Lands
- State Park
- Water Bodies (Lakes, Rivers)

Percent Renter-Occupied Housing Map

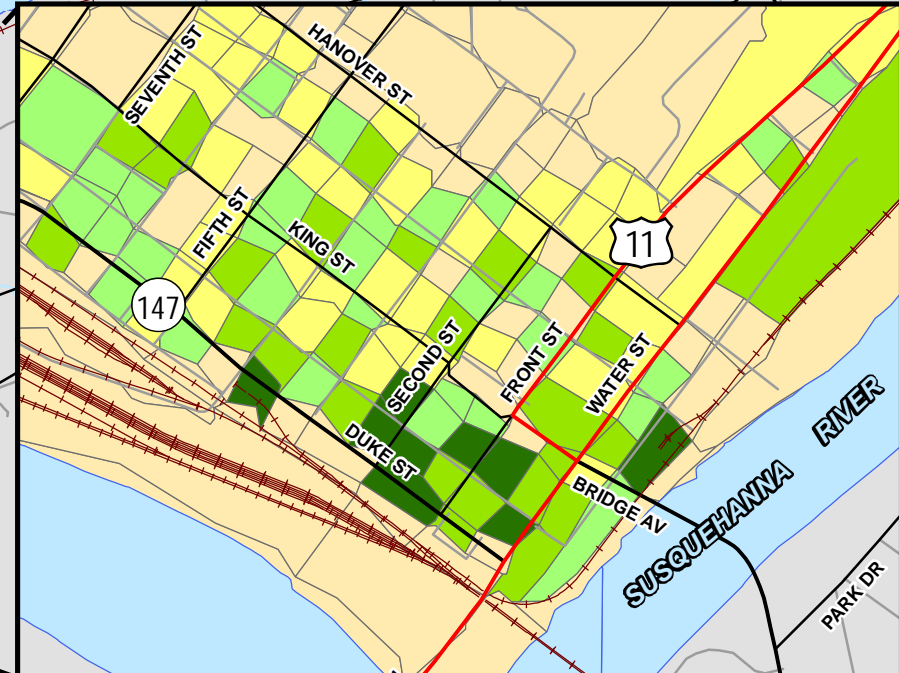
Map Projection: Pennsylvania Stateplane, North Zone; Datum NAD83 - feet
Data Source: DCNR, USGS, PGC, PennDOT, U.S. Census Bureau



Date Prepared: 6/30/08
Date Revised:



INSET MAP



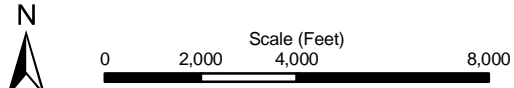
Legend

Renter-Occupied Housing Units by U.S. Census Block
Percent of Occupied Housing Units Renter-Occupied in 2000

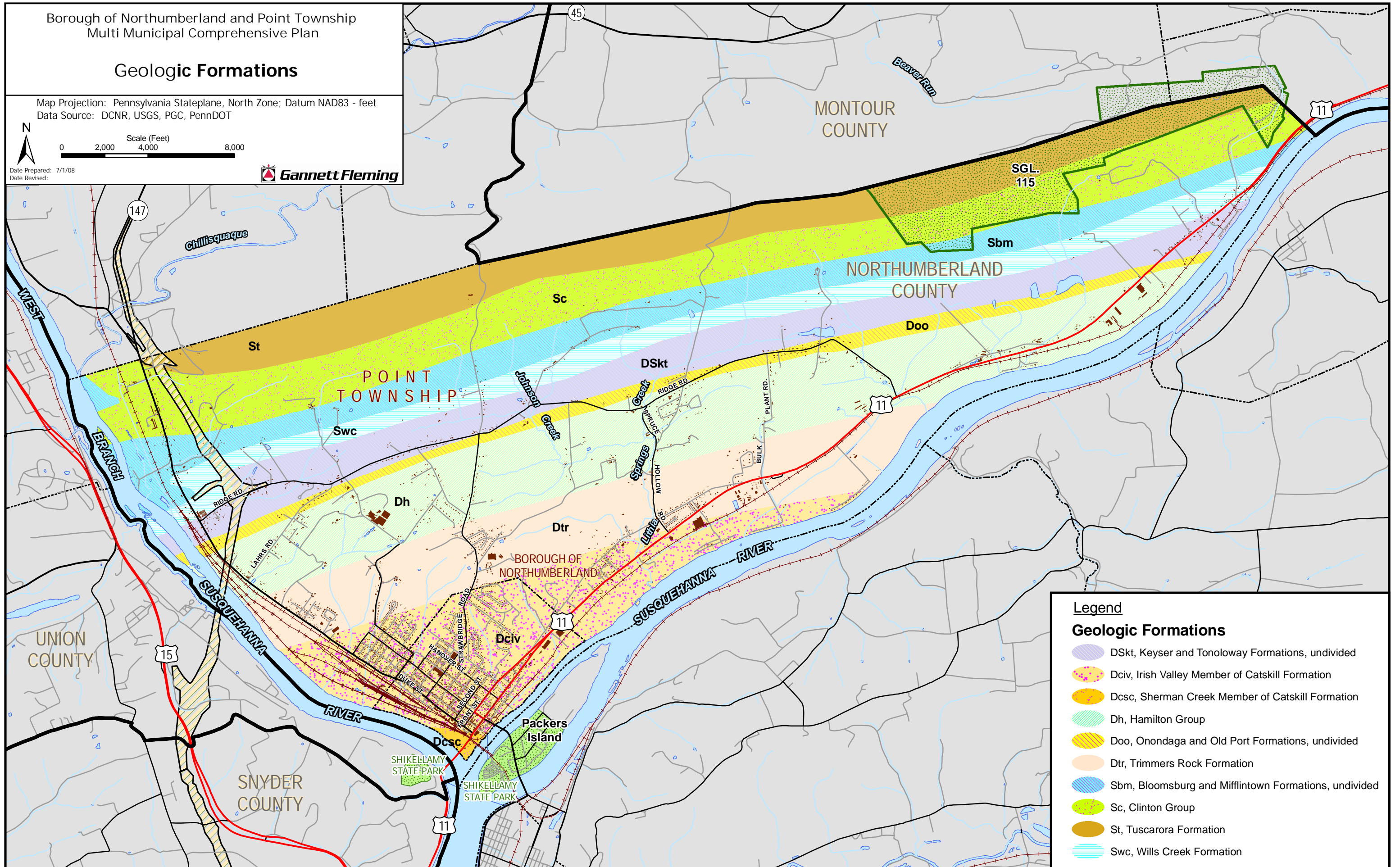
- 0% - 10%
- 11% - 30%
- 31% - 50%
- 51% - 80%
- 81% - 100%

Geologic Formations

Map Projection: Pennsylvania Stateplane, North Zone; Datum NAD83 - feet
Data Source: DCNR, USGS, PGC, PennDOT



Date Prepared: 7/1/08
Date Revised:



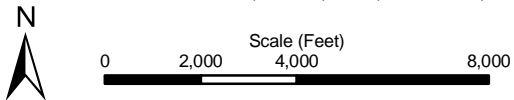
Legend

Geologic Formations

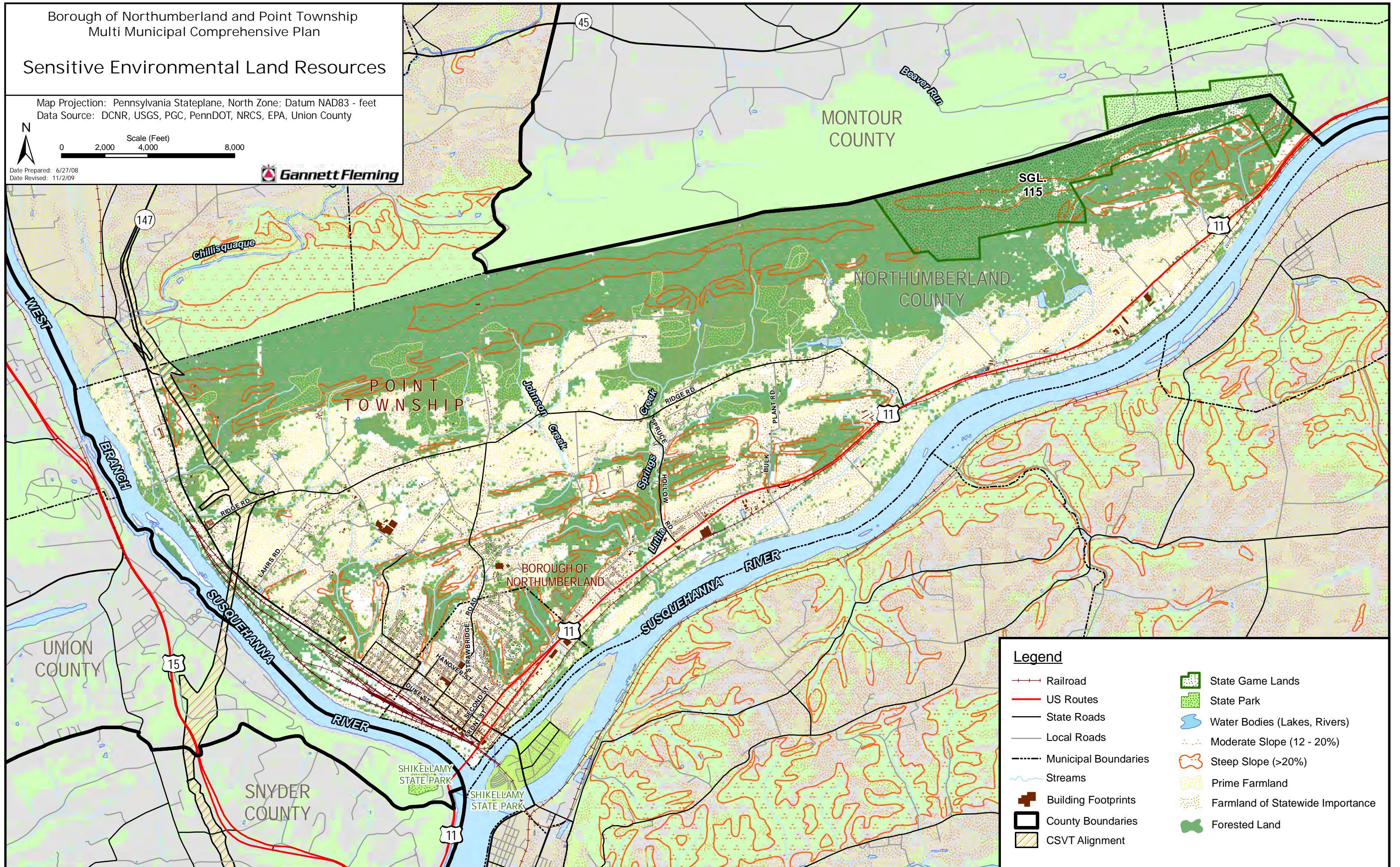
- DSkt, Keyser and Tonoloway Formations, undivided
- Dciv, Irish Valley Member of Catskill Formation
- Dcsc, Sherman Creek Member of Catskill Formation
- Dh, Hamilton Group
- Doo, Onondaga and Old Port Formations, undivided
- Dtr, Trimmers Rock Formation
- Sbm, Bloomsburg and Mifflintown Formations, undivided
- Sc, Clinton Group
- St, Tuscarora Formation
- Swc, Wills Creek Formation

Sensitive Environmental Land Resources

Map Projection: Pennsylvania Stateplane, North Zone; Datum NAD83 - feet
Data Source: DCNR, USGS, PGC, PennDOT, NRCS, EPA, Union County



Date Prepared: 6/27/08
Date Revised: 11/2/09



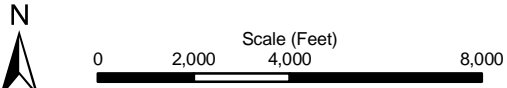
Legend

Railroad	State Game Lands
US Routes	State Park
State Roads	Water Bodies (Lakes, Rivers)
Local Roads	Moderate Slope (12 - 20%)
Municipal Boundaries	Steep Slope (>20%)
Streams	Prime Farmland
Building Footprints	Farmland of Statewide Importance
County Boundaries	Forested Land
CSVT Alignment	

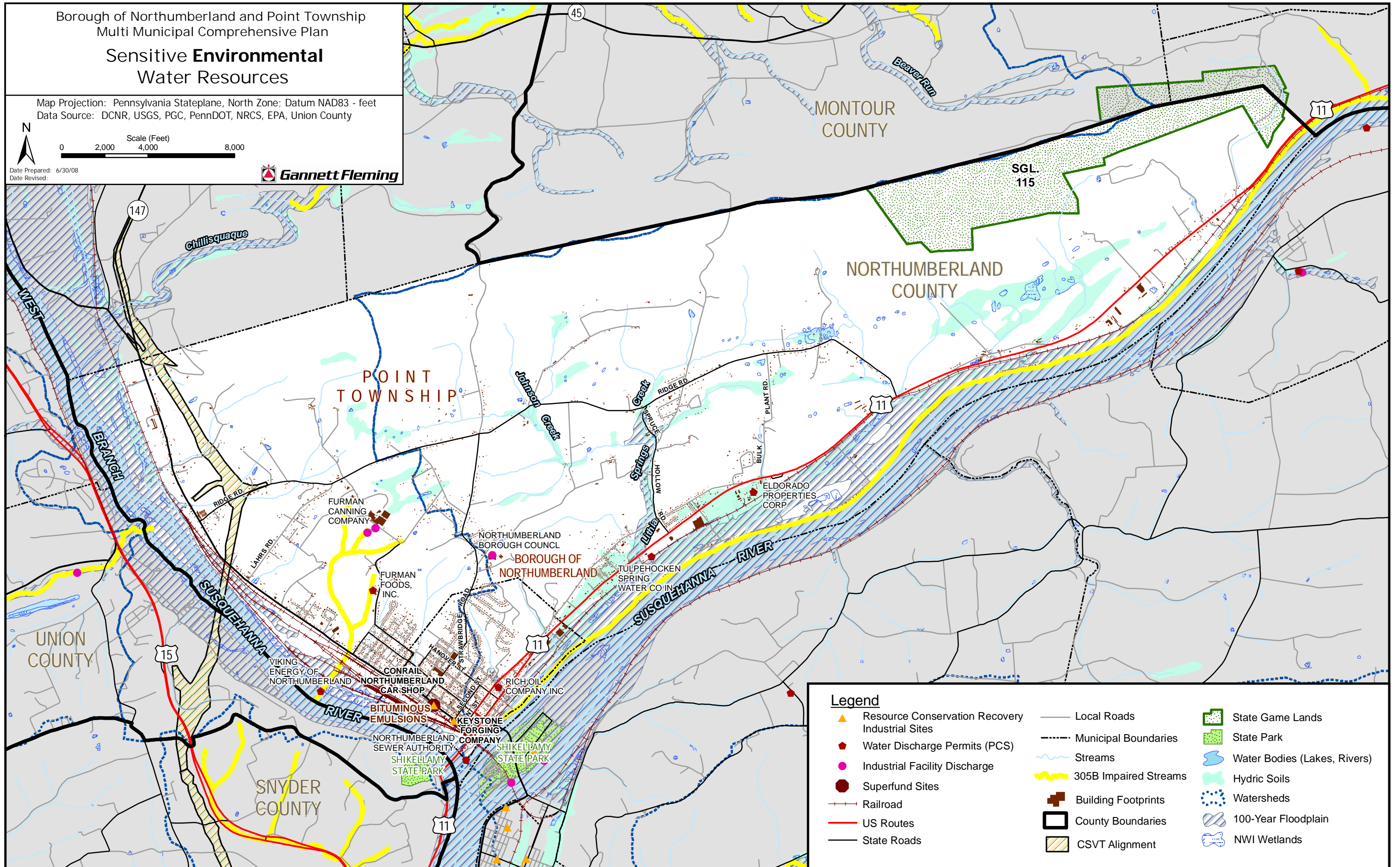
Borough of Northumberland and Point Township
Multi Municipal Comprehensive Plan

Sensitive **Environmental**
Water Resources

Map Projection: Pennsylvania Stateplane, North Zone; Datum NAD83 - feet
Data Source: DCNR, USGS, PGC, PennDOT, NRCS, EPA, Union County



Date Prepared: 6/30/08
Date Revised:

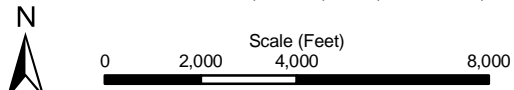


Legend

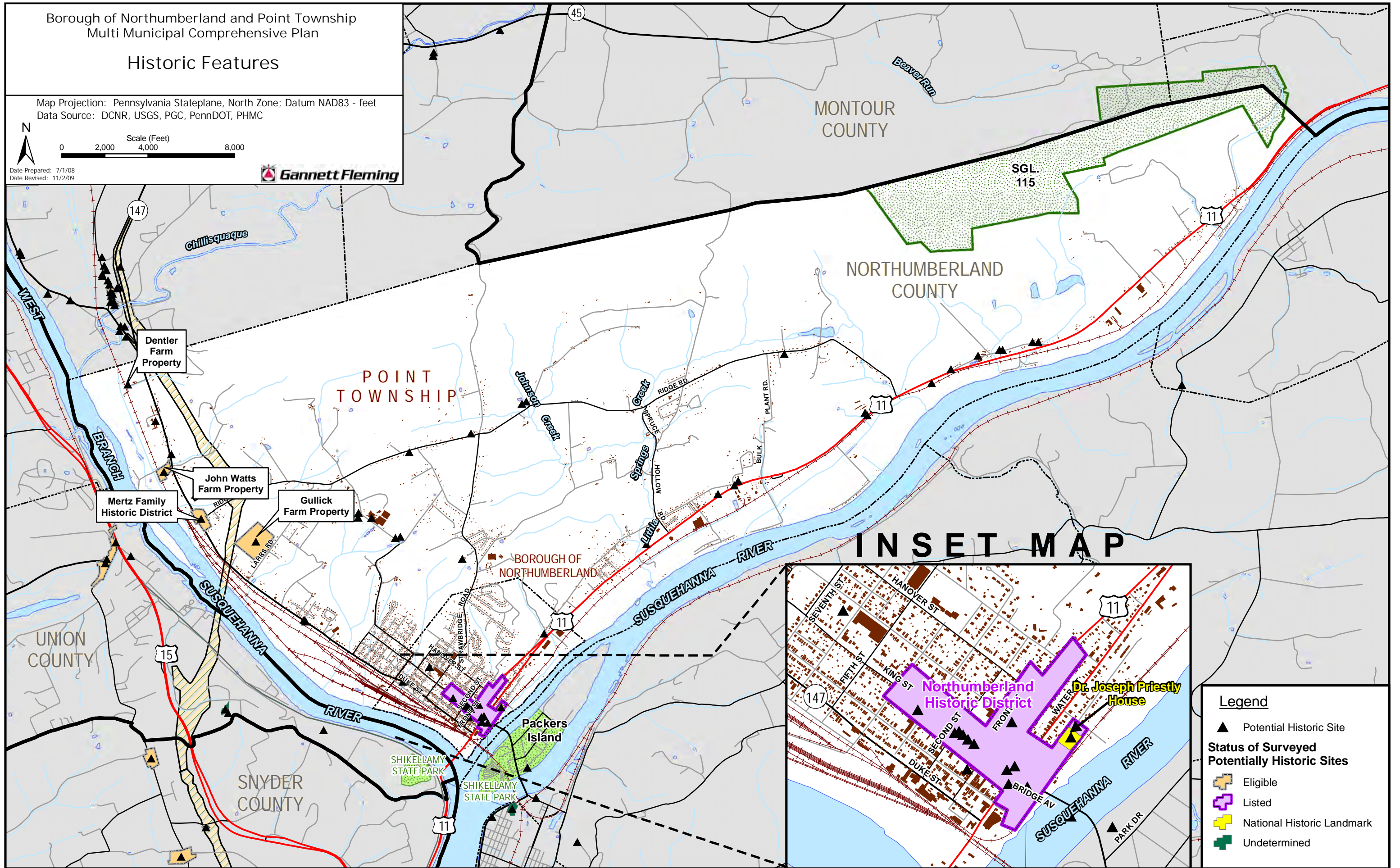
- | | | |
|---|-----------------------|------------------------------|
| Resource Conservation Recovery Industrial Sites | Local Roads | State Game Lands |
| Water Discharge Permits (PCS) | Municipal Boundaries | State Park |
| Industrial Facility Discharge | Streams | Water Bodies (Lakes, Rivers) |
| Superfund Sites | 305B Impaired Streams | Hydric Soils |
| Railroad | Building Footprints | Watersheds |
| US Routes | County Boundaries | 100-Year Floodplain |
| State Roads | CSVT Alignment | NWI Wetlands |

Historic Features

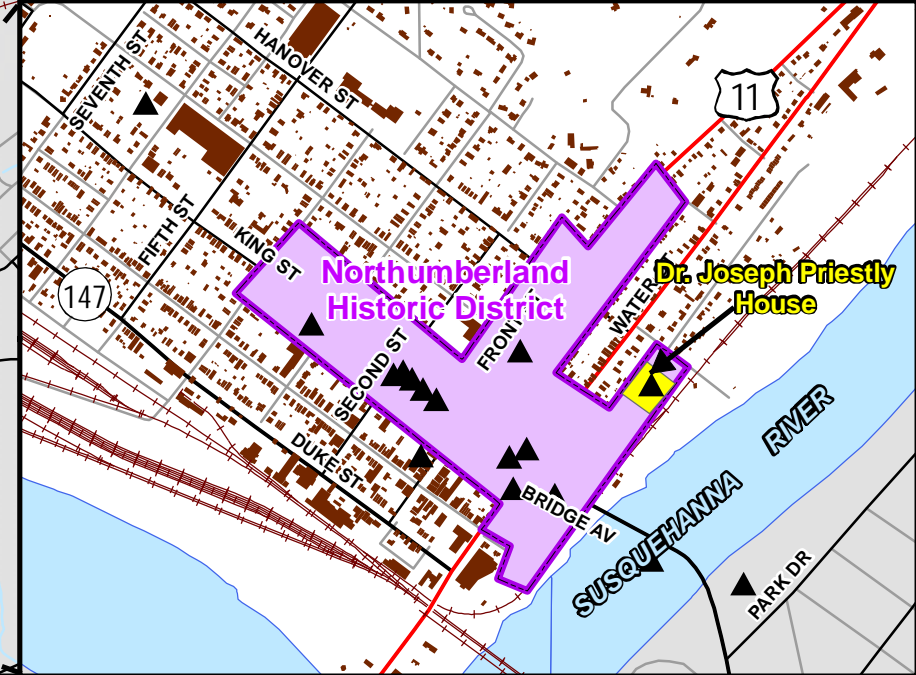
Map Projection: Pennsylvania Stateplane, North Zone; Datum NAD83 - feet
Data Source: DCNR, USGS, PGC, PennDOT, PHMC



Date Prepared: 7/1/08
Date Revised: 11/2/09



INSET MAP



Legend

- ▲ Potential Historic Site
- Status of Surveyed Potentially Historic Sites**
- ⬢ Eligible
- ⬢ Listed
- ⬢ National Historic Landmark
- ⬢ Undetermined